



We have worked extensively throughout the industry for over 40 years, and there is no other company in the trade with our working knowledge of Starter Motors, Alternators and Dynamos for Classic and Vintage applications.

Our vast experience in this field has enabled us to develop unique solutions for classic car enthusiasts, supplying an extensive range of up rated units for a wide range of applications and uses.

S L I M L I N E

GEAR REDUCTION UNITS

FITTING INSTRUCTIONS



Lightweight Alternators



Dynalite Alternators



High-Torque Starter Motors



Control Boxes



Pulleys and Fans



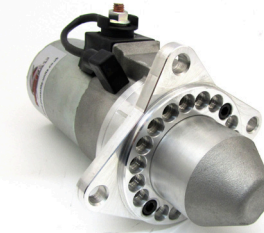
Fitting Accessories

IMPORTANT

CAREFULLY READ ALL INSTRUCTIONS BEFORE FITTING THE UNIT.

DO **NOT** OVERTIGHTEN THE TERMINAL STUD.

ENSURE THERE IS A **GOOD EARTH**. ESPECIALLY IF THE CAR HAS RECENTLY BEEN PAINTED



POWERLITE

Moor Street Brierley Hill, Dudley, West Midlands,
DY5 3SU, ENGLAND

www.powerlite-units.com

ABOUT:

The PowerLite Slimline starter motor is of the pre-engaged type with the solenoid contained in the main body. The units are a direct replacement for your original starter motor, requiring no modifications to your vehicle. It may be necessary to adjust the mounting face on the starter unit.

FITTING THE STARTER:

Most cars originally fitted with inertia starters have a separate bulkhead mounted solenoid and a single heavy power cable connecting this to the starter.

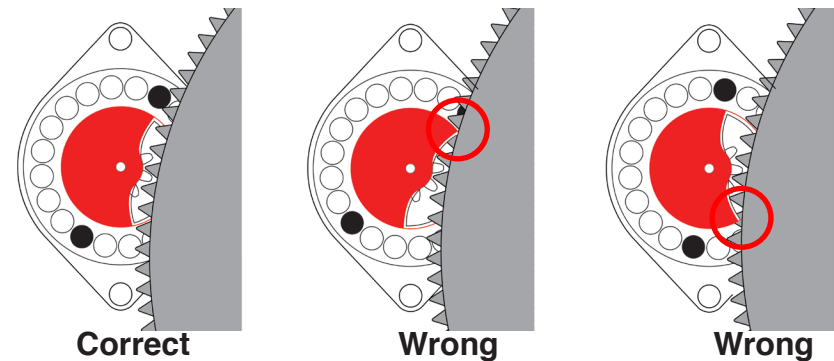
1. Disconnect battery.
2. Disconnect the power cable and remove the old unit.
3. Fit the PowerLite unit to the car leaving the link wire in place.
4. Ensure the starter nose cone does not foul the ring gear, if necessary adjust the unit. (see opposite page)
4. Connect the main power wire to the starter stud terminal and ensure the link wire spade terminal is pushed fully into position. The original bulkhead mounted solenoid is still operative, As this is a potential cause of starting failure it is possible to remove it from the starting circuit by re-routing the wiring from the solenoid to the PowerLite starter.
(Consult your dealer or an auto electrician if you are unsure how to do this).
5. Reconnect battery and test.

STARTER POSITION:

It may be necessary to adjust your starter to fit your application. When fitting ensure the nose cone does not have any contact with the ring gear.

Adjusting the starter:

1. Remove the alloy face plate retained by two allen screws.
2. Mount the face plate to the vehicle.
3. Hold the starter in position and rotate until it touches the ring gear, mark this position.
4. Repeat in the opposite direction.
5. Remove the face plate from the engine and fit to the starter in between the markings, using the closest pair of holes in the starter face plate.
6. Fit the starter and check there is no contact between the starter and ring gear.



GUARANTEE:

Your new PowerLite starter should give years of trouble free motoring under all conditions. In the unlikely event that you have any problems in the first 12 months please return it to the dealer and we will repair or replace it free of charge provided it has not been abused.