

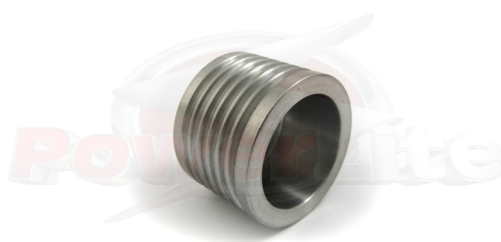
Auto Electrical Accessories

MGAL4015

Top quality, lightweight performance alternator pulley. CNC manufactured from billet aluminium by us here at Powerlite.

A smaller diameter pulley helps spin the alternator faster, ideal for competition use on high revving engines.

Powerlite "Multi Groove" 40mm lightweight aluminium pulley for competition alternators. Fits a 15mm rotor shaft - most commonly used in competition alternators.



MGAL4015	
Item	Value
Belt section	6 RIB
Grooves	6
Material	Aluminium
Pulley diameter	40 mm
Shaft diameter	15 mm
Weight	0.10 kg