



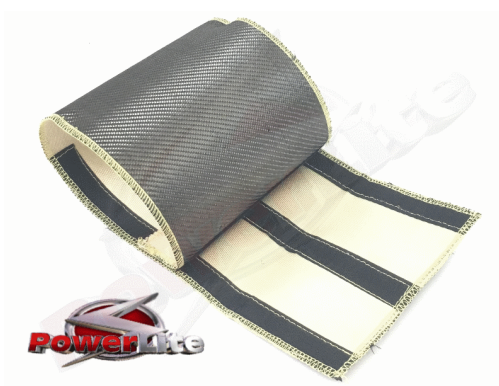
Made in the UK 

Thermal Heat Protection

PHS-680025

The "Carbon" Powerlite Starter Motor Heat Sleeve is made from 1.5mm thick aluminum and fiberglass composite cloth. It is ideal for heat protection in any situation where starter motors are tightly fitted in an engine bay, and massively help to reduce loss of power to the unit.

The "Carbon" Powerlite Starter Motor Heat Sleeves are ideal for heat protection where units are tightly fitted in an engine bay. Strong hook and loop fasteners are sewn into each sleeve for a tight grip around the unit and sleeves can be cut to size. Two heavy duty stainless steel cable ties are included.



PHS-680025

Item	Value
Material	External carbon, Internal Silica
Dimensions	180mm x 640mm
Continuous temperature	1300°F
Melt temperature	2000°F