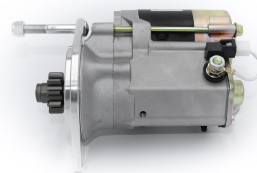
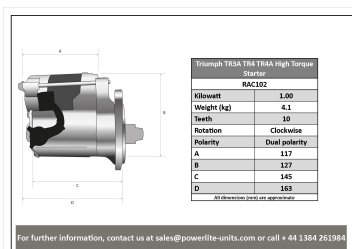


# High Torque Starter Motors

## RAC102

Direct replacement for original unit when fitted with the BOLT ON RING GEAR. Fitted with captive stud to aid fitting. Triumph TR3A TR4 TR4A Strong, powerful, offset gear-reduced starter motor, delivering huge cranking torque through a set of steel internal gears. Lightweight, compact and durable this unit starts the engine faster with immense power, whilst drawing less current from the battery.



### RAC102

| Make    | Model | Engine Size | Year        |
|---------|-------|-------------|-------------|
| Triumph | TR3A  | 1991/2138   | 1957 - 1962 |
| Triumph | TR4   | 2138        | 1961 - 1965 |
| Triumph | TR4A  | 2138        | 1965 - 1967 |

### RAC102

| Item      | Value   |
|-----------|---------|
| Kilowatts | 1.00 kW |
| Teeth     | 10      |
| Voltage   | 12 V    |
| Weight    | 4.10 kg |