



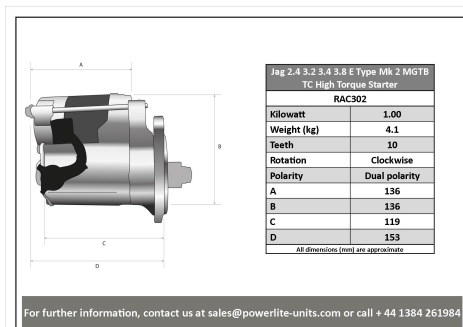
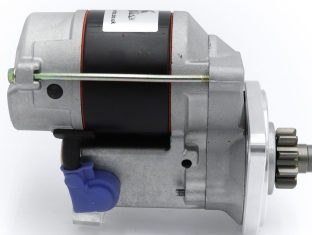
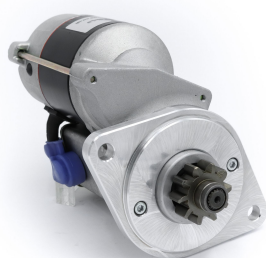
Made in the UK 

# High Torque Starter Motors

## RAC306

Jaguar high torque starter motor to suit a 3.8 bellhousing but with 4.2 flywheel with 133 tooth ring gear

Jaguar high torque starter motor to suit a 3.8 bellhousing but with 4.2 flywheel with 133 tooth ring gear Strong, powerful, offset gear-reduced starter motor, delivering huge cranking torque through a set of steel internal gears. Lightweight, compact and durable this unit starts the engine faster with immense power, whilst drawing less current from the battery.



RAC306			
Make	Model	Engine Size	Year

RAC306	
Item	Value
Kilowatts	1.4 kW
Teeth	11
Voltage	12 V
Weight	4.10 kg