



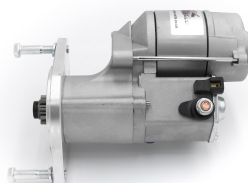
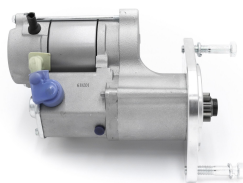
Made in the UK 

# High Torque Starter Motors

## RAC404A

Direct replacement for original unit with 29mm pinion. Check pinion diameter before fitting.

Jaguar V12. Engine with 29mm pinion Strong, powerful, offset gear-reduced starter motor, delivering huge cranking torque through a set of steel internal gears. Lightweight, compact and durable this unit starts the engine faster with immense power, whilst drawing less current from the battery. See RAC404 for 25mm pinion



### RAC404A

Make	Model	Engine Size	Year
Jaguar	V12 with 29mm pinion	5.3	1971 - 1981

### RAC404A

Item	Value
Kilowatts	1.40 kW
Teeth	9
Voltage	12 V
Weight	4.20 kg