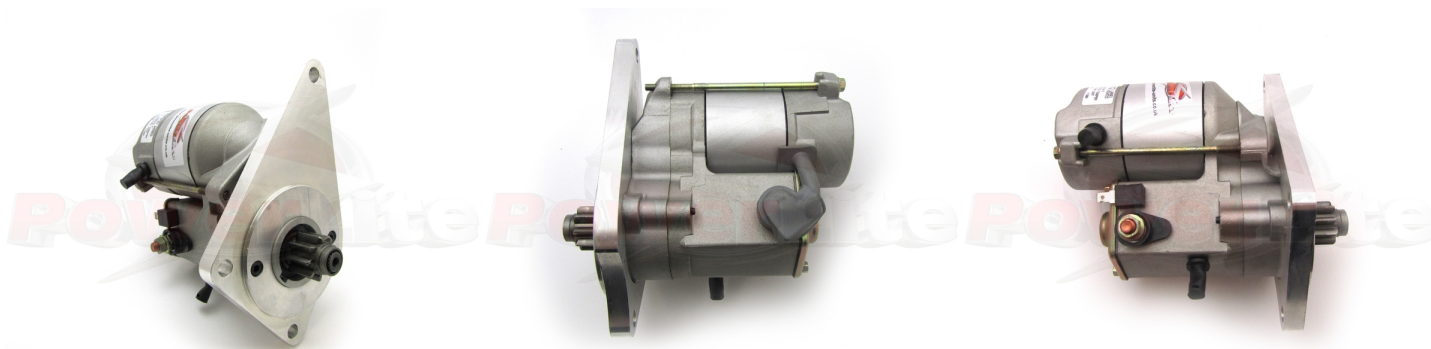


# High Torque Starter Motors

## RAC442

Ford Zetec with ZF Gearbox. **WARNING FORD:** Check you have the correct starter for your combination. Please contact if in doubt.

Ford Zetec fitted with a ZF gearbox. Incredibly powerful, offset gear-reduced starter motor. Based on a "Denso" style unit, this starter delivers huge cranking torque through a set of steel internal gears, drawing less current from the battery versus an original unit. Lightweight, compact and durable this unit uses minimum efficiency whilst delivering maximum power and has dual polarity.



### RAC442

Make	Model	Engine Size	Year
Ford	Zetec with ZF gearbox		

### RAC442

Item	Value
Kilowatts	1.40 kW
Teeth	9
Voltage	12 V
Weight	3.90 kg