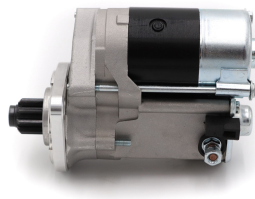
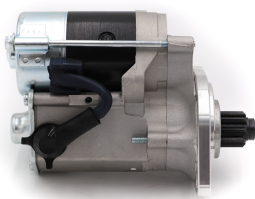


High Torque Starter Motors

RAC511

Direct Replacement For Original. 6 VOLT ONLY.

Porsche 356, 6 Volt only Strong, powerful, offset gear-reduced starter motor, delivering huge cranking torque through a set of steel internal gears. Lightweight, compact and durable this unit starts the engine faster with immense power, whilst drawing less current from the battery.



RAC511

| Make | Model | Engine Size | Year |
|---------|------------|-------------|------|
| Porsche | 356 6 volt | | |

RAC511

| Item | Value |
|-----------|---------|
| Kilowatts | 1.00 kW |
| Teeth | 9 |
| Voltage | 6 V |
| Weight | 3.80 kg |