



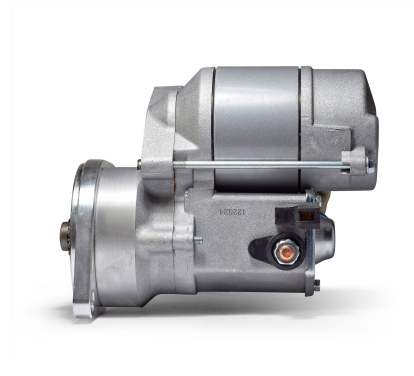
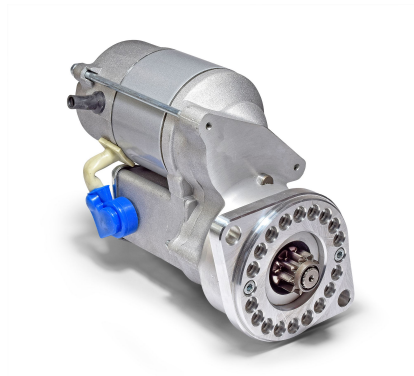
Made in the UK 

# High Torque Starter Motors

## RAC538

Triumph Dolomite Sprint, TR7 Starter 1.4kW with multi drilled bracket

Upated version of RAC406 to fit Triumph Dolomite Sprint, Triumph TR7. High Torque Starter fitted with a 1.4kW motor and a multi drilled bracket



RAC538			
Make	Model	Engine Size	Year
Triumph	Dolomite Sprint	1998	1973 - 1980
Triumph	TR7		

RAC538	
Item	Value
Kilowatts	1.40 kW
Teeth	9
Voltage	12 V
Weight	4.10 kg