



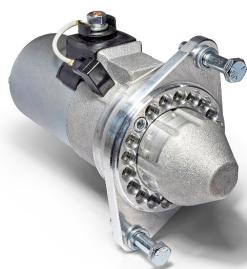
Made in the UK 

# High Torque Starter Motors

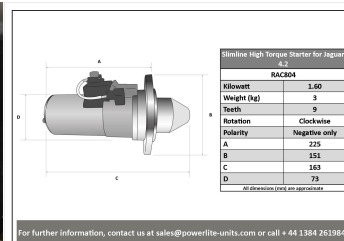
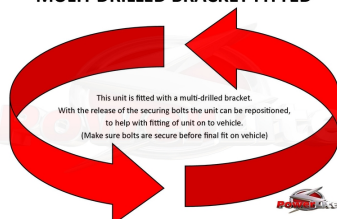
## RAC804

Direct Replacement for Original Starter - negative earth applications only

Slimline unit for Jaguar E Type with Straight 6, 4.2l engine. Deceptively powerful, this unit features an epicyclic in-line gear box which delivers extra power when engaged and an internal solenoid. Lightweight, durable and easy to fit, this unit delivers a huge amount of power for such a small unit. Designed for negative earth vehicles only.



### MULTI-DRILLED BRACKET FITTED



RAC804			
Make	Model	Engine Size	Year
Jaguar	E Type with Straight 6	4.2	

RAC804	
Item	Value
Kilowatts	1.60 kW
Teeth	9
Voltage	12 V
Weight	3.20 kg