



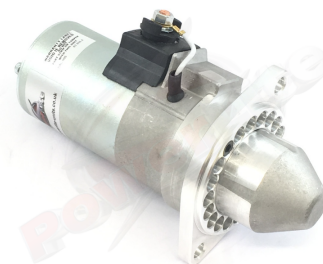
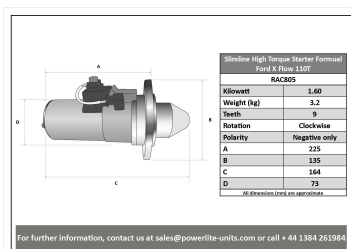
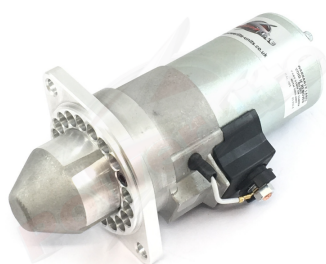
Made in the UK 

High Torque Starter Motors

RAC805

Replaces Lucas Inertia Type Starter Motor.

Slimline Formula Ford kent engine with Hewland Mk8/9 box 110T Ring gear Deceptively powerful, this unit features an epicyclic in-line gear box which delivers extra power when engaged and an internal solenoid. Lightweight, durable and easy to fit, this unit delivers a huge amount of power for such a small unit. Designed for negative earth vehicles only.



| RAC805 | | | |
|--------|--------------|-------------|------|
| Make | Model | Engine Size | Year |
| Ford | Formula Ford | | |

| RAC805 | |
|-----------|---------|
| Item | Value |
| Kilowatts | 1.60 kW |
| OEM | Lucas |
| Teeth | 9 |
| Voltage | 12 V |
| Weight | 3.00 kg |