



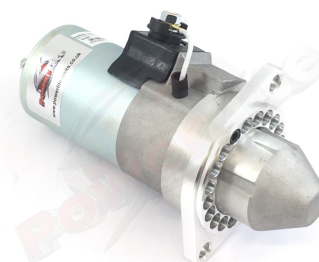
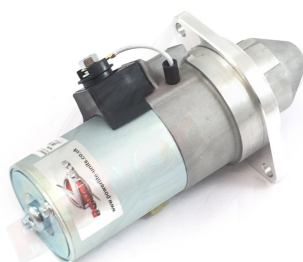
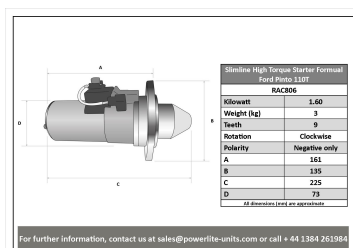
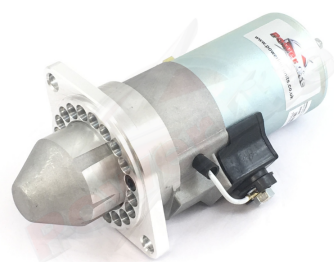
Made in the UK 

High Torque Starter Motors

RAC806

Fits Formula Ford 2000 Classic & Historic race cars using the Ford Pinto 2 litre engine to FF regulations. & standard Hewland 2 1/8" adapter plate. Also suitable for Delta T79/80 etc. (Using Delta adapter plate). 110T ring gear.

Slimline Formula Ford race cars with Pinto engine and 110T ring gear Deceptively powerful, this unit features an epicyclic in-line gear box which delivers extra power when engaged and an internal solenoid. Lightweight, durable and easy to fit, this unit delivers a huge amount of power for such a small unit. Designed for negative earth vehicles only.



RAC806			
Make	Model	Engine Size	Year
Ford	Formula Ford 2000		1975 -

RAC806	
Item	Value
Kilowatts	1.60 kW
Teeth	9
Voltage	12 V
Weight	3.00 kg