



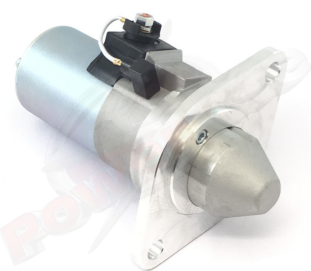
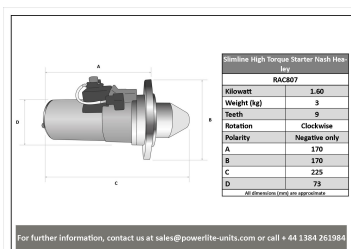
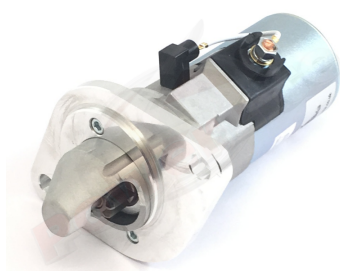
Made in the UK 

High Torque Starter Motors

RAC807

Nash Healey - Direct replacement for original unit.

Slimline starter for Nash Healey. Deceptively powerful unit, based on a "Mitsuba" style starter motor. This unit features an epicyclic in-line gear box which delivers extra power when engaged and an internal solenoid. Lightweight, durable and easy to fit, this unit delivers maximum power with minimum efficiency. Designed for negative earth vehicles only.



RAC807			
Make	Model	Engine Size	Year
Nash	Healey		

RAC807	
Item	Value
Kilowatts	1.60 kW
Teeth	9
Voltage	12 V
Weight	3.00 kg