



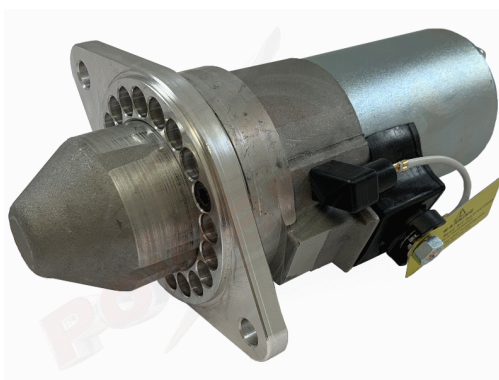
Made in the UK 

High Torque Starter Motors

RAC809

Slimline type unit to suit Coventry Climax engines.

Slimline fitting for Coventry Climax engines. Deceptively powerful, this unit features an epicyclic in-line gear box which delivers extra power when engaged and an internal solenoid. Lightweight, durable and easy to fit, this unit delivers maximum power with minimum efficiency. Designed for negative earth vehicles only.



RAC809			
Make	Model	Engine Size	Year
Coventry Climax	FWA	1097cc	1955 - 1960
Coventry Climax	FWB	1460cc	1956 - 1957
Coventry Climax	FEW	1261cc	1958 - 1963

RAC809	
Item	Value
Kilowatts	1.60 kW
Teeth	9
Voltage	12 V
Weight	3.00 kg