



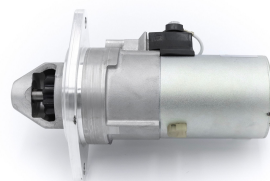
Made in the UK 

High Torque Starter Motors

RAC810

Direct replacement for original unit, supplied with Multi drilled bracket.

Slimline Starter for Austin Big Healey, 100/4, 100/6, 3000 BN1 > BJ8 engines Strong, powerful, offset gear-reduced starter motor, delivering huge cranking torque through a set of steel internal gears. Lightweight, compact and durable this unit starts the engine faster with immense power, whilst drawing less current from the battery. Designed for negative earth vehicles only.



RAC810			
Make	Model	Engine Size	Year
Austin Healey	100/4	2660	1953 - 1956
Austin Healey	100/6	2639	1956 - 1959
Austin Healey	3000	2912	1959 - 1967

RAC810	
Item	Value
Kilowatts	1.60 kW
Teeth	10
Voltage	12 V
Weight	3.20 kg